



AMERICAN ASSOCIATION OF UNIVERSITY WOMEN BRATTLEBORO BRANCH NEWSLETTER

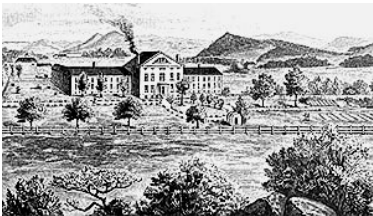
Advancing equity for women and girls through advocacy, education and research.

FALL 2009

HISTORY OF RETREAT TOPIC OF OCTOBER MEETING

The history of the Brattleboro Retreat is the subject of the meeting Tuesday, October 13 at 7 p.m. in the Central Conference room at the Retreat.

In a talk entitled "175 Years of Charting the Future," member Julie Bowen Sorensen, the Retreat's director of marketing and communication, will describe how Anna Hunt Marsh's \$10,000



Early view of the Retreat

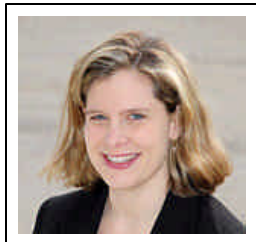
bequest led to the founding of a more humane institute for treating the insane in 1834, and how the Retreat has continued its pioneering work with mental illness, psychological trauma and addiction.

Anna Hunt Marsh was cited in the AAUW publication *Those Indomitable Vermont Women* for her generous bequest, which was "very unusual at that time when there were only 10 asylums for the mentally ill in the whole country, and the usual way of treating people was often cruel, drastic and based on ignorance of the cause of mental dysfunction."

Not much is known about Marsh's early life, but she married Perley Marsh, a physician, about 1793. They lived in Hinsdale, N.H. Anna Marsh died October 14, 1834, and a month later, the Vermont Asylum, as the Retreat was first known, was incorporated by the Vermont Legislature.

Directions: Turn off Linden Street to the Brattleboro Retreat. Park in Visitor Parking. Enter through the Main Entrance. When you enter, turn left and the Central Conference Room is on your right.

JULIA SORENSEN (daughter of Hollie Bowen) is currently Director of Marketing and Communication at the Brattleboro Retreat. She is a graduate of the University of Chicago (BA Psychology) and Smith College (MSW). She joined the Brattleboro Retreat in 2000 as a Senior Program Therapist, and in 2002, joined the Marketing Department, where she has held positions of increasing responsibility. Ms. Sorensen combines a clinical background with strong marketing, business and project management skills. She recently graduated from the Isenberg School of Business at the University of Massachusetts with a Masters in Business Administration (2008) and was appointed to the Retreat's Executive Management Team in February, 2009.



AAUW YEAR BEGINS WITH SUPER SUPPER POTLUCK

The Brattleboro AAUW will follow the tradition of beginning the program year with our *Super September Supper* potluck meeting. The date is Tuesday, Sept. 15. The time is 6 p.m. The place the Green River section of Guilford, Vermont.

Note that the date is a week later than usual because Labor Day falls on September 7, its latest possible date.

Please call by September 12 to tell us you're coming. When you call, please let us know if you are bringing a salad or a casserole. Dessert and beverages will be provided.

This has always been a special evening of delicious food and good conversation. This year, there will be opportunity to learn more about AAUW's reorganization and what it means for our branch. Plan to share rides for a drive to scenic Green River and over the covered bridge.



AAUW advances equity for women and girls through advocacy, education, and research.



Vivian oversees a great spread.

COFFEE BREAK A BIG SUCCESS!

Thanks to the many bakers, workers and donors, our first coffee break at the Guilford Welcome Center will add \$1,459.42 to our scholarship fund.

The income was \$1676.79, including \$245 in member donations, with expenses of \$217.37.



Patricia, Addie and Vivian's husband Tom on the sandwich production line.



COFFEE BREAK CANDIDS



Susan and Alice meet a customer.



Caught with her hand in the....



The two Anns package up the goodies.

P.O. Box 445
Putney, VT 05346

Because equity is still an issue.

